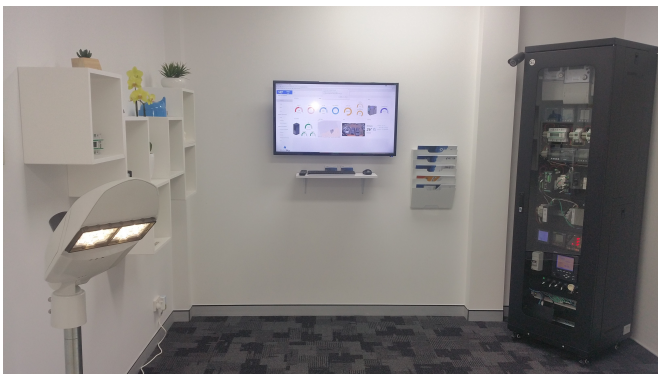


VRT's Living Lab

VRT's Living Lab began in 2012 when we started converting our office into a smart building demonstration facility.

Initial capabilities include:

- ✓ Smart power metering
- ✓ Power quality metering
- ✓ Smart water metering
- ✓ Energy and water monitoring
- ✓ Weather monitoring
- ✓ Digital displays - tenant, community engagement
- ✓ Remote monitoring
- ✓ Cloud based data storage and display - web and BYOD - WideSky®
- ✓ Visual Workplace® (3D, games based, real-time visualisations)
- ✓ Interactive social media public displays
- ✓ Smart LED lighting (internal)
- ✓ TenantView

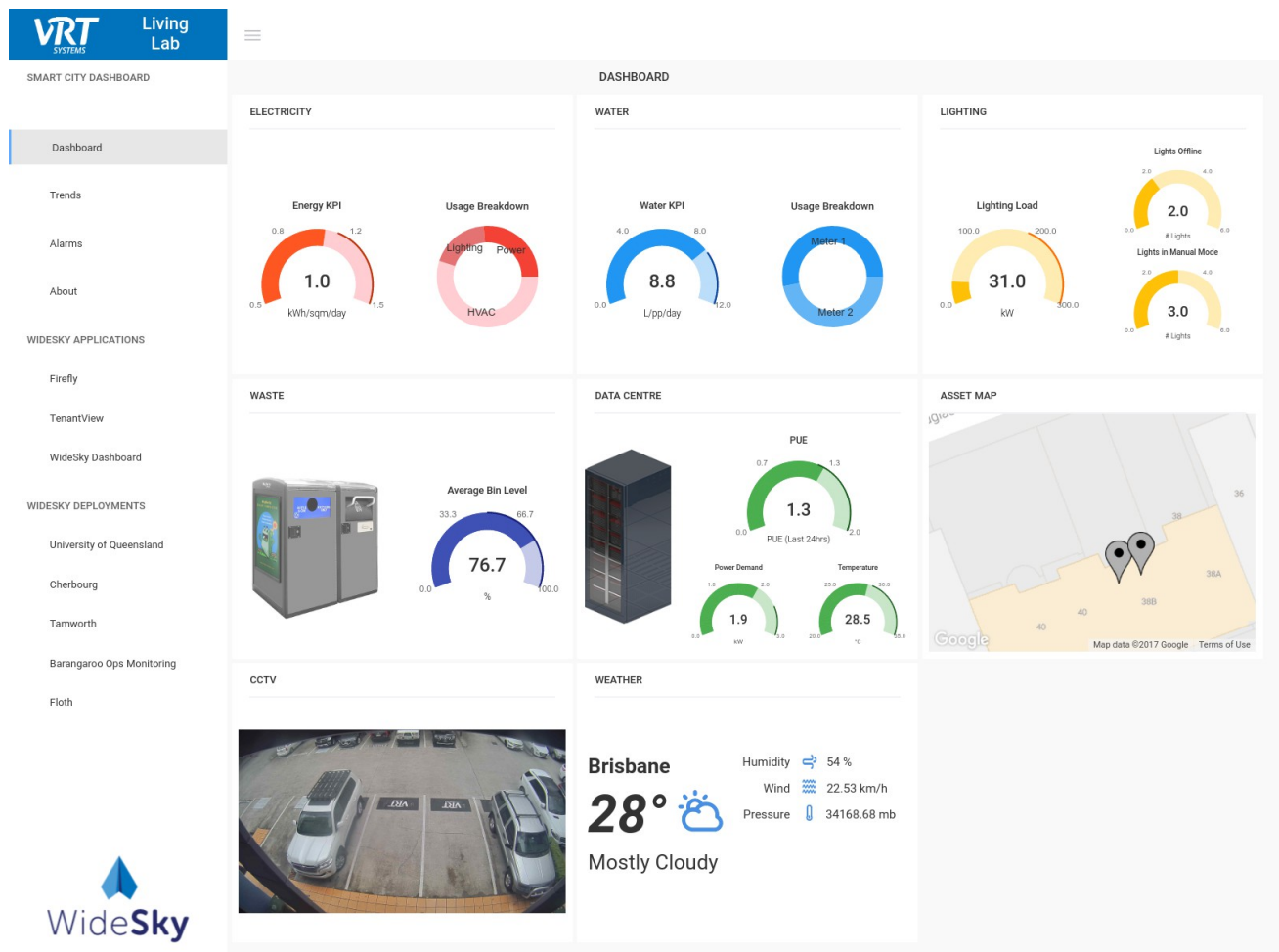


POWERED BY
WideSky

We currently have over 5 years of operational data that represents real world operations.

In 2015 we started additions on the external of the building to demonstrate **smart city** functions and integration, particularly with our own IoT Data Management platform, WideSky®.

- Smart street lighting (LED)
- CCTV (with storage - DVR)
- Smart parking
- Smart bins
- Duress station
- RFID based applications
- Environmental monitoring
- Vehicle tracking



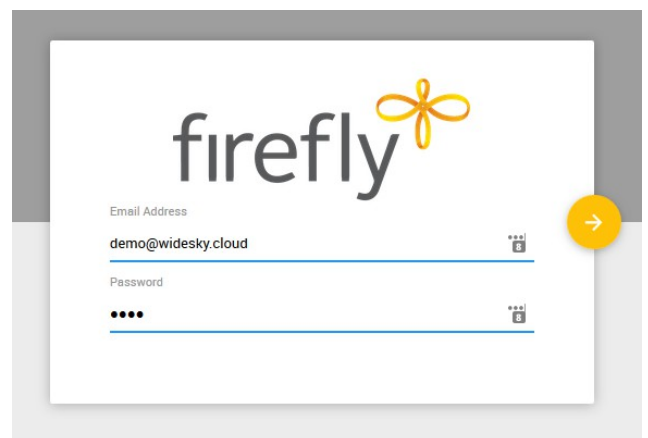
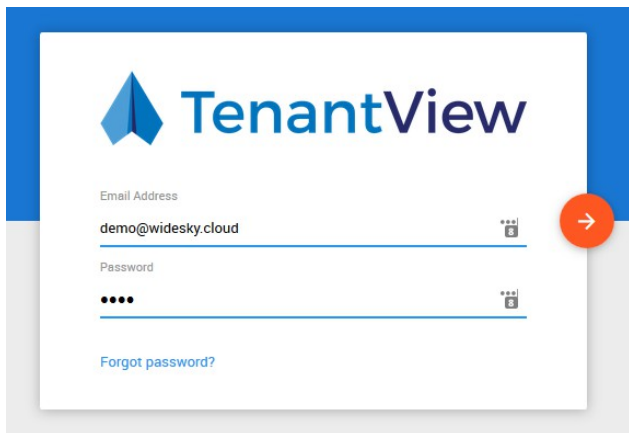
While we have given preference to testing and demonstrating products supplied by our smart city ecosystem partners (eg. CETA Australia, TransLEder Lighting & Paradox Engineering), we are open to working with other partner products too. Interoperability and conformance to international standards is another important aspect of our testing, e.g. with smart public lighting, evaluating the interchangeability on NEMA7 based smart controllers with LED luminaires from various popular suppliers, as well as TALQ interoperability between various suppliers of smart lighting systems and our Firefly Lighting Management Platform.

The activities outlined above are largely related to smart infrastructure. We also have other activities under way that are more people related. We have a range of digital display technologies from foyer level to smart phone based. To increase the level of interactivity between people and displays, we have implemented live social media integration.

We have been able to motivate several of our partners to implement limited smart building functions that are closely aligned with their core businesses and they have given us permission to demonstrate benchmarking between these buildings and VRT's (as a demonstration of the principles rather than in a performance competitive nature).



Some of our Living Lab systems are viewable remotely by interested parties.
You are welcome to interact with these sites.



MONITORING ONLY:

Living Lab Smart City Dashboard:
vrtlab.on.widesky.cloud

VRT Smart Building Dashboard (Weather, Energy and Water):

vrt.on.widesky.cloud/dashboard/db/vrt-office

Username: vrtdemo

Password: demo

VRT TenantView:

tenantview.on.widesky.cloud

Username: demo@widesky.cloud

Password: demo

MONITORING & CONTROL:

Living Lab Firefly:

firefly.on.widesky.cloud

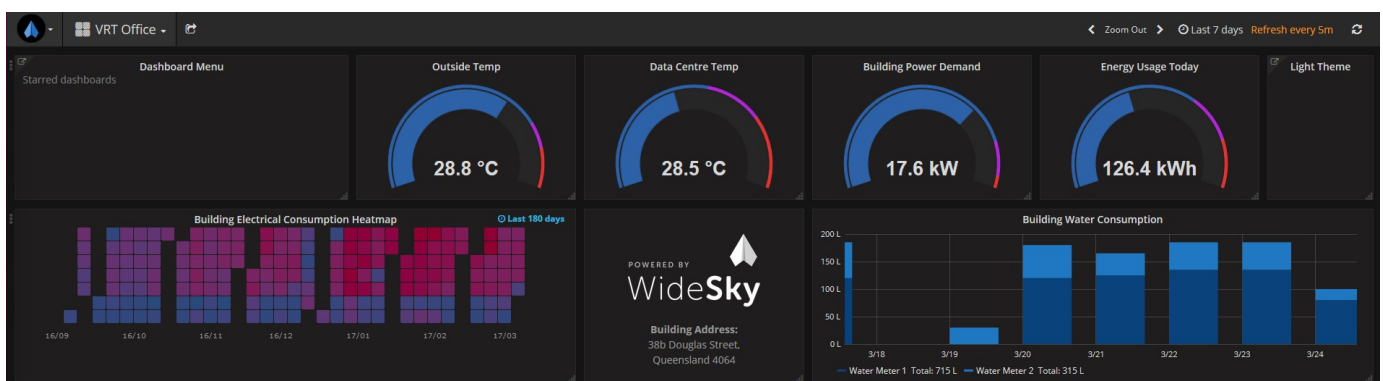
Username: demo@widesky.cloud

Password: demo

You are also invited to visit us and experience this Living Lab first hand. Please contact:

info@vrt.com.au to arrange a visit.

WATCH THIS SPACE FOR CONTINUAL GROWTH AND INNOVATION.



SOLUTIONS ENGINEERED FROM EXPERIENCE

38b Douglas St
Milton QLD 4064

T +61 7 3535 9696
F +61 7 3535 9699
E sales@vrt.com.au

www.vrt.com.au