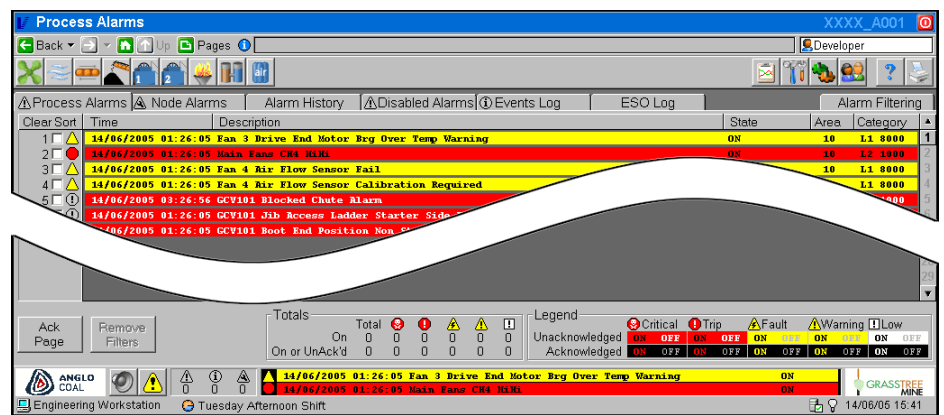


Kickstart

KickStart is a foundation for rapid development of standards-driven CitectSCADA™ systems. It utilises a combination of templates, processes and tools centered on the Enterprise Navigator. The Navigator not only provides a page navigation framework, but adds advanced trend and alarm applications, operator alerting and messaging functions, and many more - all the infrastructure required for complex systems in a simple package.

The Enterprise Navigator provides a consistent, logical user interface to the CitectSCADA system and access to commonly used elements at the click of a mouse button. A base page template is provided for building screens, and this takes care of all the navigation, security access, console messaging and system health functions. Templates are skinnable to cater for different customer requirements.

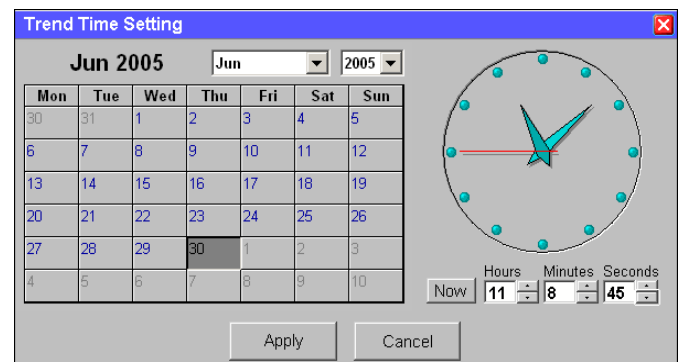


Structured page navigation, built-in advanced alarm displays with categorised alarms and drill-down

Structured tag & page naming hierarchy (fully customisable) enforces consistent design standards. The Navigator uses the structured page hierarchies to provide a logical and familiar page navigation system for operators ("Forward", "Back" and "Home" buttons like a web browser, with the addition of an "Up" function to move to a higher-level overview).

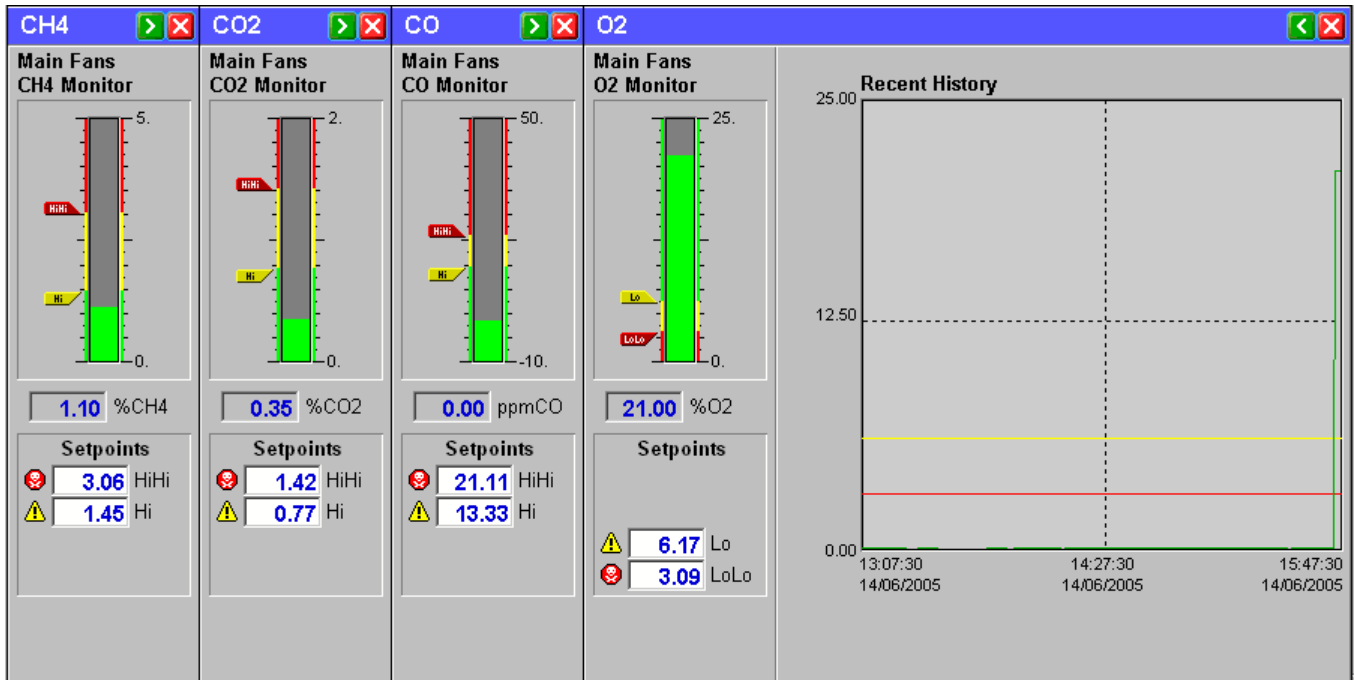


System component generators dramatically reduce engineering effort by automatically generating alarm and trend tags based on templates. The Enterprise Navigator includes comprehensive alarm and trend applications, with advanced functionality and true multi-monitor support (e.g. compare two different trend time periods on monitors side-by-side).



The Kickstart Library provides controls to manage a range of common tasks, like time & date entry.

Kick start



Library controls for loop and drive control - We've Built and tested all these CiCode functions, so you don't have to!

A library of prebuilt components and pop-ups is provided to accelerate development and ensure consistent standards.

The Navigator is "shift-aware" and can trigger end-of shift events to reactivate alarms, generate reports etc. The "current shift" can also be used in application logging or other specialised functions.

The Navigator includes a Tag Explorer that allows complete visibility of the configuration and runtime state of all tags in the system. This makes it ideal for diagnosing problems such as tag addressing issues or checking instrument scales. It is an ideal tool for verifying tag database configuration during early commissioning activities (e.g. Switchboard testing) before screen development has been completed.



Alarm summary tray, shift status indicator

GCV101						
Alarms	Status	Variables	Setpoints	Controls	Select Device	
System	Sequence	Drive	Motor	Chute	Belt	Deluge
Magnet	Station Controller	Station 60	Station 62	Station 67	Station 68	Station 45
Station 46	Station 47	Station 48	Station 1	Station 2	Station 3	Station 4
Station 5	Station 49	Station 50				

GCV101 : GTCV_CNVI01_SYS						
Alarms	Status	Variables	Setpoints	Controls	Select Device	
Running	✓		1.00	Conveyor 101 Status		
Pull keys OK	✓		0.00	Pull keys status word		
Water Sprays Energised	✓		0.00	Emergency Stops OK word		
Emergency Stops OK	✓		0.00	Blocked Chute OK word		
Conveyor Load Detected	✓					

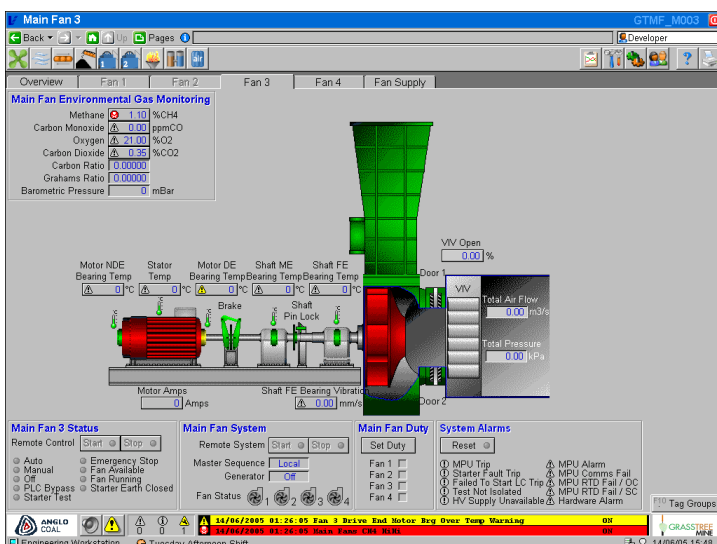
The Tag Explorer leverages the structured tag naming hierarchy to provide filtering, searching and drill-down.

Kick start

True multi-monitor support offering separate trend and alarm functionality for each display

- ✓ Advanced alarm displays for process alarms, CitectSCADA hardware alarms, disabled alarms, alarm history, events and special alarms logs.
- ✓ Predefined alarm categories (Critical, Trip, Fault, Warning, Low and Events), each with a distinctly different display icon and configurable tone.
- ✓ Alarm tones are generated at each node and can be silenced (with countdown timer) or deactivated on a node by node basis.

- ✓ Alarms can be easily configured to display alarm popups, or read various tags values upon activation, or require special operator interaction upon acknowledgements.
- ✓ True representation of Plant Areas with context-sensitive alarm drill-down, and filtering across multiple fields
- ✓ Advanced trend displays incorporating the concept of trend groups (Grouping of sets of trend pens). Provides the ability for the operator to create and save their own trend pen sets for all users or just themselves.
- ✓ Operator-adjustable trend defaults allows an operator to save a set of trend scales for a particular page (e.g. Zoomed in on the normal operating range of a point) and have the trend plot at their saved scales when they return to the page later.
- ✓ The Navigator reads much of its configuration from a database, so many changes can be made on-the-fly with far fewer recompiles.



Level 1, 1 Gardner Close
PO Box 1486
Milton 4064
Queensland Australia
Phone: +617 3367 1388
Fax: +617 3367 1295
Email: sales@vrt.com.au
Web: www.vrt.com.au